

Method Statement Sikafloor[®]-262 AS N

BU-Contractors

Scope:

Method statement for the application of Sikafloor[®]-262 AS N, a 2-part, electrostatically conductive self-smoothing epoxy resin system.

The information contained herein and any other advice are given in good faith based on Sika's current knowledge and experience of the products when properly stored, handled and applied under normal conditions in accordance with Sika's recommendations. The information only applies to the application(s) and product(s) expressly referred to herein. In case of changes in the parameters of the application, such as changes in substrates etc., or in case of a different application, consult Sika's Technical Service prior to using Sika products. The information contained herein does not relieve the user of the products from testing them for the intended application and purpose. All orders are accepted subject to our current terms of sale and delivery. Users must always refer to the most recent issue of the local Product Data Sheet for the product concerned, copies of which will be supplied on request.



Sika Services AG, Tüffenwies 16, 8048 Zürich, Switzerland
Phone: +49 711 8009 3231 / Fax: +49 711 8009 1251
E-Mail: willmann.joerg@ch.sika.com
www.sika.com

Table of Contents:

1. Products and Description.....	3
2. Sikafloor®-262 AS N System Build Up	4
3. Substrate Requirements	5
3.1 Pull off and compressive strength	5
3.2 Moisture content	5
3.3 Ambient and surface temperature	6
4. Substrate Preparation	8
5. Substrate Priming and Levelling.....	10
6. Mixing of Sikafloor-156 / -161	11
6.1 Mixing of 200 kg drums	11
6.2 Mixing of smaller units	12
7. Application of Sikafloor-156 / -161 as a Primer.....	15
8. Mixing and Application of the Scratch Coat	16
9. Placing of Earthing Points.....	17
9.1 Installation Instruction.....	18
10. Mixing and application of Sikafloor-220 W Conductive	19
11. Mixing of Sikafloor-262 AS N.....	20
12. Application of Sikafloor-262 AS N	21
13. Measurement of the conductivity	23
13.1 Test methods	23
13.2 Measuring equipment.....	24
13.3 Additional recommendations	25
14. Tools and Equipment.....	26
15. Cleaning and Subsequent Maintenance.....	27
16. Health and Safety Recommendations	30



1. Products and Description



- **Sikafloor®-156**

Two part, economic, solvent-free epoxy resin binder for priming, levelling mortars and screeds.

- **Sikafloor®-161**

Two part, solvent-free epoxy resin binder for priming, levelling mortars and screeds (Streetfighter Concept)



- **Sikafloor®-262 AS N**

Two part, solvent-free, pigmented epoxy resin binder for self-smoothing screeds.

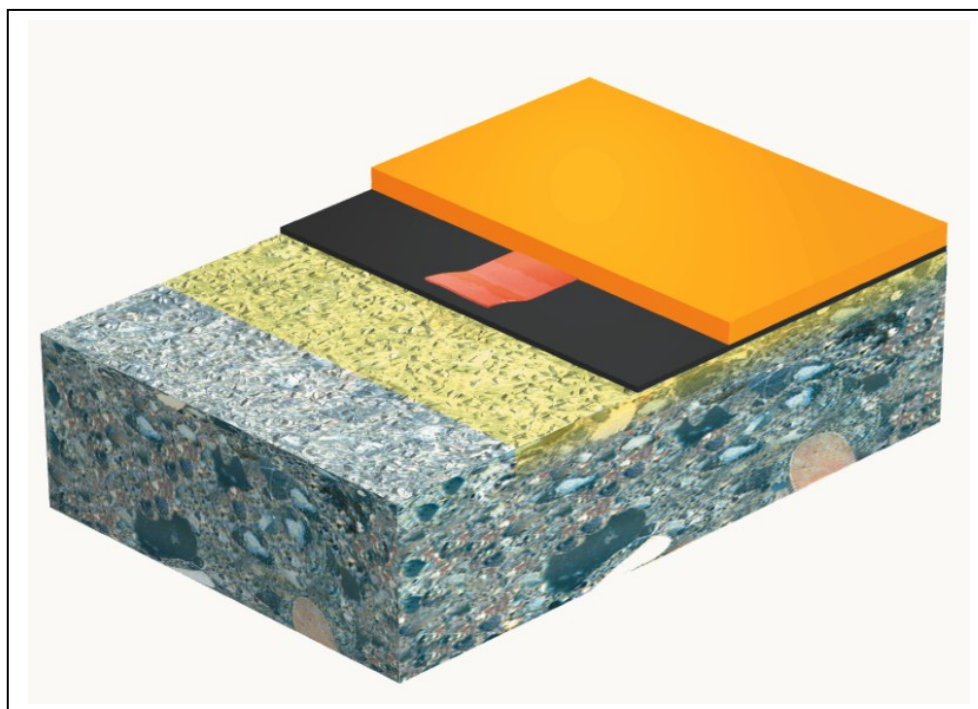


- **Quartz sand**

0.1 - 0.3 mm

2. Sikafloor®-262 AS N System Build Up

Coating System	Product	Consumption
Primer	Sikafloor®-156 / -161	0.35 - 0.55 kg/m ²
Levelling (optional)	Sikafloor®-156 / -161 levelling mortar	Refer to PDS of Sikafloor®-156 / -161
Earthing Connection	Sikafloor® Earthing Kit	1 earthing point per 300 m ²
Conductive coat	Sikafloor® 220 W Conductive	0.08 - 0.10 kg/m ²
Conductive wearing course smooth (Film thickness ~ 1.5 mm)	Sikafloor®-262 AS N filled with quartz sand 0.1 - 0.3	Maximum 2.5 kg/m ² Binder + quartz sand 10 - 15°C: 1 : 0.2 pbw (2.0 + 0.5 kg/m ²) 15 - 20°C: 1 : 0.3 pbw (1.9 + 0.6 kg/m ²) 20 - 30°C: 1 : 0.4 pbw (1.8 + 0.7 kg/m ²)
Conductive wearing course textured (Film thickness ~ 0.5 mm)	Sikafloor®-262 AS N + Extender T + Thinner C	0.75 kg/m ² 1.25 % (by weight) 2% (by weight)



Construction



Sika Services AG, Tüffenwies 16, 8048 Zürich, Switzerland
 Phone: +49 711 8009 3231 / Fax: +49 711 8009 1251
 E-Mail: willmann.joerg@ch.sika.com
 www.sika.com

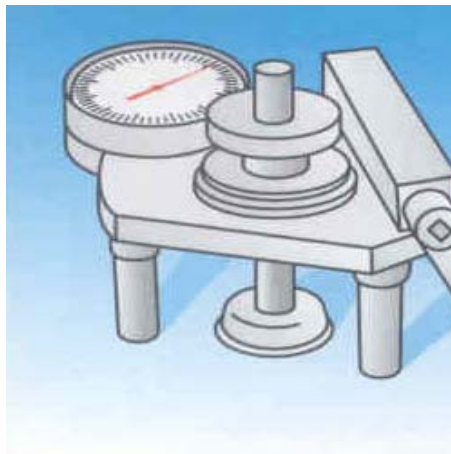
3. Substrate Requirements

3.1 Pull off and compressive strength

The concrete substrate must be sound and of sufficient compressive strength (minimum 25 N/mm²) with a minimum pull off strength of 1.5 N/mm².

The substrate must be clean, dry and free of all contaminants such as dirt, oil, grease, coatings and surface treatments, etc.

If in doubt, apply a test area first.



Measuring of the Pull-off strength > 1.5 N/mm². E.g. Proceq, Dyna pull-off tester.

3.2 Moisture content

Prior to application, confirm substrate moisture content, r.h. and dew point. If > 4% pbw moisture content, Sikafloor® EpoCem® may be applied as a T.M.B. (temporary moisture barrier) system.



Measuring of the substrate moisture: Moisture content < 4% by weight. E.g. Sika Tramex moisture meter.



Tramex moisture meter.

There must be no rising moisture according to ASTM D 4263 (Polyethylene sheet test)



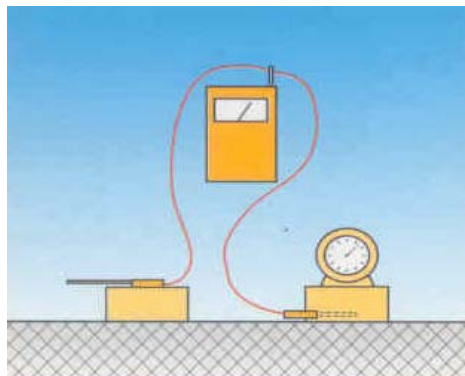
< 4% pbw if priming with Sikafloor®-156 / -161

> 4% pbw application of a temporary moisture barrier with Sikafloor®-81 EpoCem (please refer to Sikafloor-81 EpoCem Product Data Sheet)

3.3 Ambient and surface temperature

Ambient and Surface temperature:

- Min. +10°C (but at least 3°C above dew point)
- Max. +30°C



Defining the climatic conditions:
Substrate temp. > 3°C above dew point E.g. thermometer, hygrometer, dew point table.

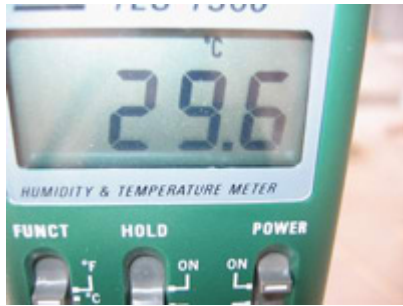
Substrate temperature:



Substrate temperature > 10°C



Ambient temperature:



Ambient temperature below 30°C

Relative air humidity:



Relative air humidity max. 80%

Note: The speed of any chemical reaction is dependent on temperature. As a general rule, the higher the temperature, the more rapid the reaction.

Beware of condensation!
The substrate must be at least 3°C above dew point.



4. Substrate Preparation

Concrete substrates must be mechanically prepared using abrasive blast cleaning to remove cement laitance, existing coatings and achieve a gripping profile that is clean, dry and free from laitance, dirt, grease, oil and any other form of surface contamination. Vacuum blasting or similar techniques are ideally suited.

Weak concrete must be removed and surface defects such as blowholes and voids must be fully exposed.

Repairs to the substrate, filling of blowholes / voids and surface levelling must be carried out using appropriate products from the Sikafloor®, SikaDur® and SikaGard® range of materials.



Preparation of the substrate:
Blast cleaning or other mechanical means.
E.g. Blastrac.

The concrete or screed substrate has to be primed or levelled in order to achieve an even surface.

High spots must be removed by e.g. grinding.

All dust, loose and friable material must be completely removed from all surfaces before application of the product, preferably by brush and/or vacuum.

The selected method of preparation will depend on the surface condition, environmental constraints and availability of services. The method may be selected on the basis of trial areas, approved by the Contract Administrator.



Vacuum shot blasting

Concrete substrates must be prepared mechanically using abrasive blast cleaning or scarifying equipment to remove cement laitance and achieve a profiled open textured surface



Cleaning of the surface

All dust, loose and friable material must be completely removed from all surfaces before application of the product, preferably by brush and vacuum.



Clean substrate

The surface must be clean, dry and free of all contaminants, e.g. dirt, oils, grease, coatings and surface treatments, etc.



Substrate defects, such as cracks, blow holes and voids must be repaired using appropriate products from the SikaTop®, Sika® MonoTop®, Sikafloor®, Sikadur® or Sikagard® range.

If in doubt apply a test area first.

5. Substrate Priming and Levelling

Primer:

Make sure that a continuous, pore free coat covers the substrate. If necessary, apply two priming coats. Apply Sikafloor®-156 / -161 at a consumption of 0.3 - 0.55 kg/m² by means of brush, roller or squeegee.

Average consumption for scratch coats and primer are shown in the table below:

Sikafloor-156 / 161	0.3 - 0.55 kg/m ²
Levelling (Optional. In case of a surface roughness > 0.5 mm) <u>Surface roughness < 1 mm</u> Sikafloor-156 / -161 1 pbw Sikafloor-156 / -161 + 0.5 pbw quartz sand (0.1 - 0.3 mm) + 0.015 pbw Extender T Total consumption	 1.0 kg/m ² 0.5 kg/m ² 0.015 kg/m ² 1.4 - 1.5 kg/m ² /mm
<u>Surface roughness up to 2 mm</u> Sikafloor -156 / -161 1 pbw Sikafloor-156 / -161 + 1 pbw quartz sand (0.1 - 0.3 mm) + 0.015 pbw Extender T Total consumption	 1.0 kg/m ² 1.0 kg/m ² 0.015 kg/m ² 1.6 - 1.7 kg/m ² /mm

Construction



6. Mixing of Sikafloor-156 / -161

Please follow chapter 6.1 when using 200 Litre drums.
For smaller units follow chapter 6.2.

6.1 Mixing of 200 kg drums



Barrel cart



Pneumatic drum mixer

The 180 kg drums can be easily handled using a 'barrel cart'.



Materials can be easily decanted into smaller units using a tap and a scale.



Application trolley



Mixing gauge

Note: Mix Component A using an electric or pneumatic barrel stirrer (300 - 400 rpm) for at least 3 minutes before decanting into smaller units to the correct mixing ratio using a Sika mixing gauge. To be used with the barrel cart in order to assist the personnel on site with the distribution of the material.

6.2 Mixing of smaller units



Mixing area:

Make sure that all materials are available and easy accessible so that during the application a "wet edge" can always be maintained.

Note:

Mix Component A using an electric or pneumatic drum mixer (300 - 400 rpm) for at least 3 minutes.

Mix Component A and B of Sikafloor-156 / -161 using an electric or pneumatic stirrer (300 - 400 rpm) for at least 3 minutes or longer, until homogeneous, uniform mix is achieved.

Mix Ratio of A : B = 3 : 1 by weight

Transfer mixed material to a clean container and mix for another minute.

Construction



Prior to mixing, stir component A (resin) and add all of component B (hardener).



Make sure the hardener is fully emptied into the resin component



Mix both components thoroughly with a low speed electric stirrer (300 - 400 rpm).



Construction



Mix for at least 3 minutes until a uniform mix has been achieved.



Transfer mixed material to a clean container.



Mix for another minute.



7. Application of Sikafloor-156 / -161 as a Primer

Make sure, that all substrate requirements are met, such as temperature, moisture content of the prepared substrate etc. (please refer to section 5). Apply Sikafloor-156 / -161, if the moisture content is below 4%, (test method: Sika-Tramex, or CM-measurement or Oven-dry-method; no rising moisture according to ASTM (Polyethylene-sheet)). If the moisture content is above 4%, apply Sikafloor EpoCem system as a temporary moisture barrier – please refer to the PDS).

Apply the mixed material by roller, taking care to ensure good wetting of the substrate but avoiding puddles on the surface. Work within the potlife of the material (15 minutes at 30°C).

Clean all tools and application equipment with Thinner C immediately after use. Hardened and / or cured material can only be removed mechanically.

Freshly applied Sikafloor®-156 / -161 should be protected from damp, condensation and water for at least 24 hours. Sikafloor®-156 / 161 mortar screed is not suitable for frequent or permanent contact with water unless sealed.



Apply by brush, roller or squeegee and work well into the substrate.

8. Mixing and Application of the Scratch Coat

Make sure, that the application of the scratch coat is still within the overcoating time.

Mix Component A and B of Sikafloor-156 / -161 using an electric or pneumatic stirrer (300 - 400 rpm) for at least 2 minutes or longer, until homogeneous colour is obtained.

Mix Ratio of A : B = 3 : 1 by weight

When Parts A and B have been mixed, add the quartz sand and if required Extender T and mix for a further 2 minutes until a uniform mix has been achieved.

Mix Ratio of A+B : quartz sand : Extender T =

Surface roughness < 1 mm

1 pbw Sikafloor-156 / -161
+ 0.5 pbw quartz sand (0.1 - 0.3 mm)
+ 0.015 pbw Extender T

Surface roughness up to 2 mm

1 pbw Sikafloor-156 / -161
+ 1 pbw quartz sand (0.1 - 0.3 mm)
+ 0.015 pbw Extender T

Transfer to a clean container and mix again shortly.

Pour onto the floor and then spread it evenly using a twin blade trowel ore squeegee in the required layer thickness. Work within the potlife of the material (15 minutes at 30°C).

Clean all tools and application equipment with Thinner C immediately after use. Hardened and / or cured material can only be removed mechanically.

After curing, grinding of the whole area is recommended to remove high spots.



Application of the scratch coat by squeegee / trowel to the required thickness – kneeling down or ...



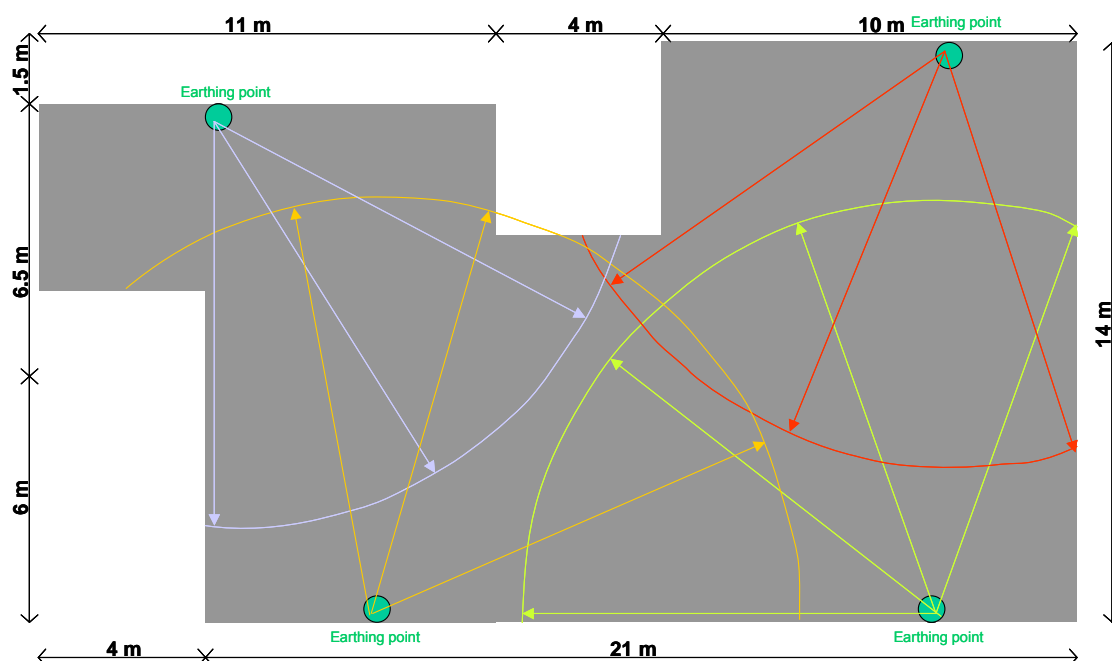
.... standing up.

9. Placing of Earthing Points

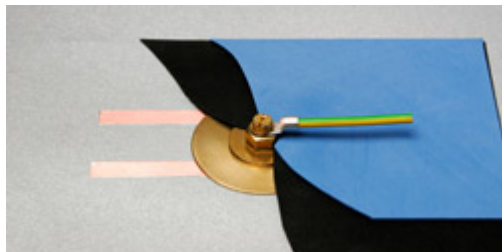
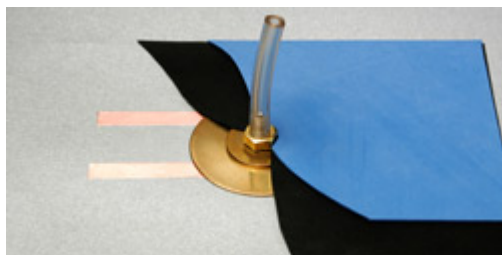
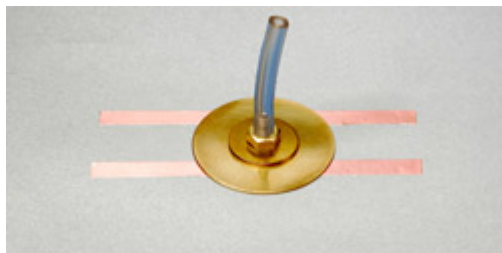
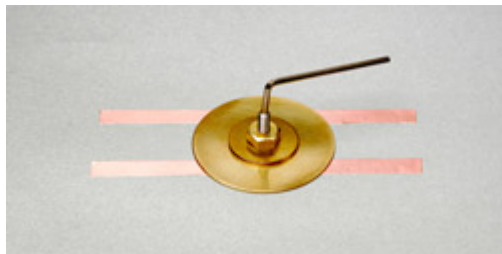
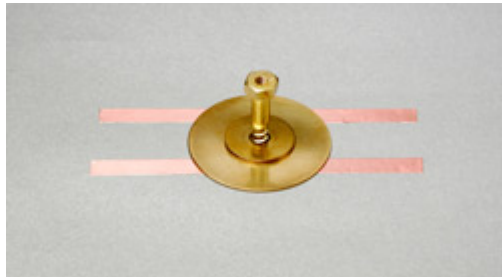
Every earthing point is able to conduct approx. 300 m². Ensure the longest distance of each point in the area is max. 10 m to the next earthing point. For longer distances, additional earthing points have to be placed. If site conditions do not allow placing of additional earthing points, longer distances (>10 m) have to be bridged with the help of copper tapes. The earthing points have to be connected to the ring-mains. This work must be carried out and approved by an electrical engineer and in accordance with any relevant local regulations

The optimum number of earthing connections depends on the local conditions and should be specified using available drawings.

Example:



9.1 Installation Instruction



- 1a) Prepare and prime the substrate in accordance with the Product Data Sheet.
- 1b) Drill a 10 mm diameter hole, depth > 60 mm
- 1c) Insert anchor, anchor must be flush with the floor surface.
- 1d) Remove all dust, loose and friable material and wipe surface clean
- 2a) Apply the copper tapes (2 x 10 mm) at either side of the drill-hole as shown in the picture above.
- 2b) Fix the large and medium size brass-plates with the large brass screw.
- 3a) Fasten small stainless steel threaded bar into the head of the large brass screw.
- 3b) Fit the small plastic tube onto the threaded bar and fasten tightly.
- 4a) Make sure the plastic tube is fitted tightly before the application of Sikafloor materials.
- 4b) Apply the conductive coating including the conductive layer.
- 4b) After curing of Sikafloor materials, remove the plastic tube and the threaded bar.
- 5a) Clean the head of the brass screw properly.
- 5b) Fix the eyelet fastener using the small brass washer and screw to the large brass screw.

Construction



10. Mixing and application of Sikafloor-220 W Conductive

Prior to mixing, stir part A mechanically. When all of part B has been added to part A, mix continuously for 3 minutes until a uniform mix has been achieved.

Mix Ratio of A : B = 83 : 17 by weight.

To ensure thorough mixing pour materials into another container and mix again to achieve a consistent mix.

Over mixing must be avoided to minimise air entrainment.

Apply the mixed Sikafloor-220 W Conductive over the whole area of the floor by roller, taking care to ensure good wetting of the substrate and overcoat as well the brass plate up to the anchor.

Work within the potlife of the material (1 hour at 30°C).

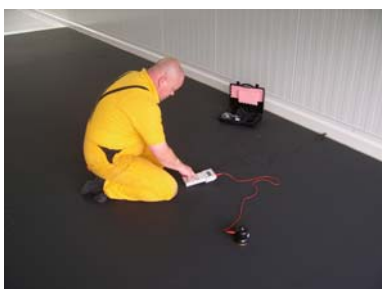
Do not apply higher than 0.1 kg/m².

The fully cured film must show a mat and even black appearance.

Conductivity of Sikafloor-220 W Conductive has to be tested and checked, prior to the application of the top coat.



Application of Sikafloor-220 W Conductive using a short haired roller.



Conductivity of Sikafloor-220 W has to be tested and checked, prior to the application of the top coat.

**Desired value: Resistance to earth R_G :
>1•10³ Ω - <5•10³ Ω (>1 K Ω - < 5 K Ω)**

11. Mixing of Sikafloor-262 AS N



Mixing area:

Make sure that all materials are available and easy accessible so that during the application a "wet edge" can always be maintained.

Prior to mixing, stir part A mechanically. When all of part B has been added to part A, mix continuously for 2 minutes until a uniform mix has been achieved.

When parts A and B have been mixed, add the quartz sand 0.1 - 0.3 mm and mix for a further 2 minutes until a uniform mix has been achieved.

To ensure thorough mixing pour materials into another container and mix again to achieve a consistent mix.

Over mixing must be avoided to minimise air entrainment.



Mixing of Sikafloor-262 AS N

Note: Please refer to the section 6 with regards to the mixing procedure, which is analogue to that of Sikafloor-156 / -161.

12. Application of Sikafloor-262 AS N

Make sure, that the application of Sikafloor®-262 AS N is still within the overcoating time.

Sikafloor®-262 AS N is poured and spread evenly by means of a serrated trowel. Turn the serrated trowel and smooth the surface in order to remove air bubbles.

Roll immediately in two directions with a spiked roller to ensure even thickness and to remove entrapped air.

Clean all tools and application equipment with Thinner C immediately after use. Hardened / cured material can only be mechanically removed.



Sikafloor®-262 AS N is poured and spread evenly by means of a serrated trowel, either standing up or kneeling down.



After spreading the material evenly, turn the serrated trowel and smooth the surface in order to achieve an aesthetically higher grade of finish.



Close up.

Construction





Roll immediately in two directions with a steel spiked roller to ensure even thickness and to remove entrapped air.



Steel spiked roller.

13. Measurement of the conductivity

13.1 Test methods

The method of conductivity measurement must be stated in the specification, method statement and tender documents.

Resistance to earth R_G according to IEC 61340-5-1

Surface Resistance electrode/probe	Weight: 2.50 kg (+/- 0.25 kg) Diameter: 65 mm (+/- 5 mm) Rubber pad hardness: Shore A 60 (+/- 10)
Requirements: Electrostatically Conductive floorings (ECF)	$< 1 \cdot 10^9 \Omega$
Typical average resistance to ground R_G :	$10^4 \Omega - 10^6 \Omega$ (IEC 61340-4-1)
Preferred test method:	Surface to ground test R_G

The measurement of resistance to earth as recommended by Sika is shown in the table below:

Ready applied area	Number of measurements
< 10 m ²	1 measurement / m ²
10-100 m ²	10-20 measurements
> 100 m ²	10 measurements/ 100 m ²

In case of values lower/higher as required, an additional measurement has to be carried out, approx. 30 cm around the point with insufficient readings. If the newly measured values are in accordance with the requirements, the total area is acceptable.

Measurement device: Resistance meter (ohm meter)
 Range min. $1 \times 10^3 \Omega$ / $1 \times 10^4 \Omega - 1 \times 10^{13} \Omega$

Surface Resistance electrode: Weight: 2.50 kg (+/- 0.25 kg)
 Diameter: 65 mm (+/- 5 mm)
 Rubber pad hardness: Shore A 60 (+/- 10)

Measurement Procedure:

1. Place the electrode on the floor and connect the probe via wire to the ohm meter
2. Connect the second wire first with the earthing point and second with the ohm meter
3. Take measurements
4. Number of measurements must be coordinated with the ESD-representative



13.2 Measuring equipment



Measurement device:	Resistance meter (ohm meter) Range min. $1 \times 10^3 \Omega / 1 \times 10^4 \Omega - 1 \times 10^{13} \Omega$
Voltage:	10 V for resistances $< 1 \times 10^6 \Omega$ 100 V for resistances $\geq 1 \times 10^6 \Omega$
Measurement duration:	15 ± 2 s
Measuring electrodes:	Metal electrodes with a contact area 65 ± 5 mm for hard non-conformable surfaces: Conductive rubber pad Shore A 60 ± 10 : Weight: $2,5 \pm 0,25$ kg for hard non-conformable surfaces $5,0 \pm 0,25$ kg for all other surfaces
Equipment recommendation:	- Insulation Tester ET-150 PC - Carbon Rubber electrode"
Supplier:	ET & ESD Lösungen Diana Conrads Birkenweg 12 D-89188 Merklingen Phon: +49 7337 922283 Fax +49 7337 922284 URL: http://www.et-esd.com Email: esd@et-esd.de

13.3 Additional recommendations

Read the Product Data Sheet carefully, particularly the Notes on Applications / Limitations for further information on how to prevent application mistakes.

No specific conductivity or electrical resistance values mentioned in any of the international or national standards are mandatory.

The values can be adapted to meet the local requirements by the responsible authorities.

Before applying an ESD or conductive flooring system, Sika always recommends a detailed assessment of at least the following parameters and then for the appropriate values to be agreed and accepted by all of the parties involved:

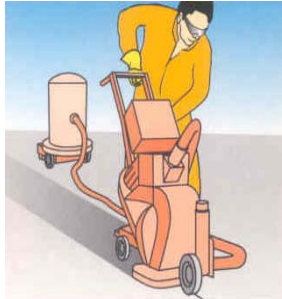
- Limits for the electrical resistance and body voltage generation
- Methods of Measurement
- Equipment to make these measurements
- Any applicable standards or specifications

A final acceptance of the agreed parameters must be set in conjunction with a reference area.

14. Tools and Equipment

Application equipment:

Professional equipment is required to achieve a functioning floor, such as: vacuum shot blaster, grinder, scabblers etc.



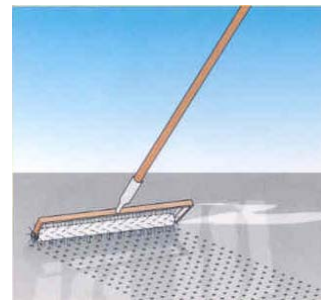
Preparation of the substrate:
Blast cleaning or other
mechanical means e.g. Blastrac



Even application of Primer coat
Sikafloor®-156 / -161 and the conductive
Layer **Sikafloor®-220 W Conductive**:
with medium to long haired roller or brush.
E.g. Polyplan roller and brush.



Spreading of **Sikafloor®-262 AS N** with notched trowel. E.g.
Polyplan notched trowel 5/7 mm.



Removal of entrapped air: Spike
rolling immediately e.g. Polyplan
spike roller.

Recommended Supplier of Tools:

PPW-Polyplan-Werkzeuge GmbH

www.polyplan.com

Techno-Werkzeuge A.E. Vertriebs GmbH

www.techno-vertrieb.de

Korbach Werkzeug Co.GmbH & Co.KG.
Pajarito-Werkzeugfabrik

www.pajarito.de

Collomix Rühr- und Mischgeräte GmbH

www.collomix.de



Sika Services AG, Tüffenwies 16, 8048 Zürich, Switzerland
Phone: +49 711 8009 3231 / Fax: +49 711 8009 1251
E-Mail: willmann.joerg@ch.sika.com
www.sika.com

15. Cleaning and Subsequent Maintenance

To ensure that your Sika flooring system stays in the best of shape and gives you years of satisfaction the correct cleaning and maintenance schedule should be used.

When first installed and fully cured your floor should be cleaned with an appropriate floor cleaner using the most suitable equipment for the area concerned.



Initial Clean:

Firstly, you should sweep the area to remove any loose debris.

An inspection of the area should then be undertaken to see, if there are any areas that require individual treatment such as oil spillages or scuff marks from shoes or fork lift tyres. Application of industrial cleaning detergents to these areas, either as supplied or diluted with water, then given some agitation and allowed to dwell for 5 to 10 minutes will help to remove these.

The floor area should then be cleaned using a mild alkaline cleaner or the heavier duty alkaline cleaner. Method of and equipment for the cleaning of the area will depend upon size and manpower available. On site surveys should be carried out by a professional specialist floor cleaning company. Their representatives have knowledge of resin products coupled with the correct chemicals and machinery to clean and maintain your **Sikafloor®** to the highest levels at all times.

Pre-use Inspection:

The floor should now be inspected to ensure that it has been cleaned to your required standard and that all soiling has been removed.

Precautions:

If you will now be placing equipment, storage racking, goods, furniture, filing cabinets etc. on the floor, then every effort should be taken to minimise surface scratching and marking. Dragging of heavy articles across the flooring may damage the surface. Fork lift trucks should be driven with care to avoid marking caused by wheel spin or slide.



Sika Services AG, Tüffenwies 16, 8048 Zürich, Switzerland
 Phone: +49 711 8009 3231 / Fax: +49 711 8009 1251
 E-Mail: willmann.joerg@ch.sika.com
 www.sika.com

Looking After Your Floor:

If the correct cleaning and maintenance schedule is used the appearance of your floor can be easily maintained.

For floors with a high gloss finish it is acceptable practice to lay a sacrificial layer of an acrylic polish, which will keep the high gloss finish, give a hard wearing surface, have the ability to allow for the removal of surface scratches or blemishes, whilst still incorporating anti-slip properties.

Once the above action or the decision to leave the floor as supplied has been taken, then the floor will require regular cleaning with either a neutral or mildly alkaline floor cleaner depending upon the type and level of soiling encountered.

If you have decided to use a sacrificial surface polish on your floor then any visible wear can be overlaid with a fresh coat. However, if continual additions of coats are made then it may be necessary to occasionally remove the polish and start-a-fresh.

Spillages:

Spillages of any liquid should be wiped up or absorbed and removed as soon as possible. Not only is this a responsible action as far as Health and Safety is concerned, it will also help you to keep your floor in good condition. Once the spillage is removed the area should be cleaned as usual with your standard floor cleaner. If a sacrificial coat has been previously applied the floor should be inspected to see if this remains. If not, it should be reapplied as soon as possible.

Remember:

Initial clean before use.

- Take care when installing equipment etc.
- Sacrificial polish if required.
- Regular cleaning with the right product and equipment where necessary.
- Clean up spillages.

And your **Sikafloor®** will give you years of hard wear and still look good.



Sikafloor-Cleaning Regime with cleaning agents from Kärcher (available on www.sika.com):

Construction

Sikafloor®- Cleaning Regime with cleaning agents from Kärcher

KÄRCHER	Description	Primary cleaning				Maintenance cleaning			
		alkali	acid	neutral	alkali	acid	neutral	alkali	
Sikafloor-Primer 11-11 + Primer Phase 1-10		X	X	X	X	X	X	X	X
Sikafloor-Primer 15/16, Primerphase 081-17-18		X	X	X	X	X	X	X	X
Sikafloor-100-010		X	X	X	X	X	X	X	X
Sikafloor-100-020		X	X	X	X	X	X	X	X
Sikafloor-100-030		X	X	X	X	X	X	X	X
Sikafloor-100-040		X	X	X	X	X	X	X	X
Sikafloor-100-050		X	X	X	X	X	X	X	X
Sikafloor-100-060		X	X	X	X	X	X	X	X
Sikafloor-100-070		X	X	X	X	X	X	X	X
Sikafloor-100-080		X	X	X	X	X	X	X	X
Sikafloor-100-090		X	X	X	X	X	X	X	X
Sikafloor-100-100		X	X	X	X	X	X	X	X
Sikafloor-100-110		X	X	X	X	X	X	X	X
Sikafloor-100-120		X	X	X	X	X	X	X	X
Sikafloor-100-130		X	X	X	X	X	X	X	X
Sikafloor-100-140		X	X	X	X	X	X	X	X
Sikafloor-100-150		X	X	X	X	X	X	X	X
Sikafloor-100-160		X	X	X	X	X	X	X	X
Sikafloor-100-170		X	X	X	X	X	X	X	X
Sikafloor-100-180		X	X	X	X	X	X	X	X
Sikafloor-100-190		X	X	X	X	X	X	X	X
Sikafloor-100-200		X	X	X	X	X	X	X	X
Sikafloor-100-210		X	X	X	X	X	X	X	X
Sikafloor-100-220		X	X	X	X	X	X	X	X
Sikafloor-100-230		X	X	X	X	X	X	X	X
Sikafloor-100-240		X	X	X	X	X	X	X	X
Sikafloor-100-250		X	X	X	X	X	X	X	X
Sikafloor-100-260		X	X	X	X	X	X	X	X
Sikafloor-100-270		X	X	X	X	X	X	X	X
Sikafloor-100-280		X	X	X	X	X	X	X	X
Sikafloor-100-290		X	X	X	X	X	X	X	X
Sikafloor-100-300		X	X	X	X	X	X	X	X
Sikafloor-100-310		X	X	X	X	X	X	X	X
Sikafloor-100-320		X	X	X	X	X	X	X	X
Sikafloor-100-330		X	X	X	X	X	X	X	X
Sikafloor-100-340		X	X	X	X	X	X	X	X
Sikafloor-100-350		X	X	X	X	X	X	X	X
Sikafloor-100-360		X	X	X	X	X	X	X	X
Sikafloor-100-370		X	X	X	X	X	X	X	X
Sikafloor-100-380		X	X	X	X	X	X	X	X
Sikafloor-100-390		X	X	X	X	X	X	X	X
Sikafloor-100-400		X	X	X	X	X	X	X	X
Sikafloor-100-410		X	X	X	X	X	X	X	X
Sikafloor-100-420		X	X	X	X	X	X	X	X
Sikafloor-100-430		X	X	X	X	X	X	X	X
Sikafloor-100-440		X	X	X	X	X	X	X	X
Sikafloor-100-450		X	X	X	X	X	X	X	X
Sikafloor-100-460		X	X	X	X	X	X	X	X
Sikafloor-100-470		X	X	X	X	X	X	X	X
Sikafloor-100-480		X	X	X	X	X	X	X	X
Sikafloor-100-490		X	X	X	X	X	X	X	X
Sikafloor-100-500		X	X	X	X	X	X	X	X
Sikafloor-100-510		X	X	X	X	X	X	X	X
Sikafloor-100-520		X	X	X	X	X	X	X	X
Sikafloor-100-530		X	X	X	X	X	X	X	X
Sikafloor-100-540		X	X	X	X	X	X	X	X
Sikafloor-100-550		X	X	X	X	X	X	X	X
Sikafloor-100-560		X	X	X	X	X	X	X	X
Sikafloor-100-570		X	X	X	X	X	X	X	X
Sikafloor-100-580		X	X	X	X	X	X	X	X
Sikafloor-100-590		X	X	X	X	X	X	X	X
Sikafloor-100-600		X	X	X	X	X	X	X	X
Sikafloor-100-610		X	X	X	X	X	X	X	X
Sikafloor-100-620		X	X	X	X	X	X	X	X
Sikafloor-100-630		X	X	X	X	X	X	X	X
Sikafloor-100-640		X	X	X	X	X	X	X	X
Sikafloor-100-650		X	X	X	X	X	X	X	X
Sikafloor-100-660		X	X	X	X	X	X	X	X
Sikafloor-100-670		X	X	X	X	X	X	X	X
Sikafloor-100-680		X	X	X	X	X	X	X	X
Sikafloor-100-690		X	X	X	X	X	X	X	X
Sikafloor-100-700		X	X	X	X	X	X	X	X
Sikafloor-100-710		X	X	X	X	X	X	X	X
Sikafloor-100-720		X	X	X	X	X	X	X	X
Sikafloor-100-730		X	X	X	X	X	X	X	X
Sikafloor-100-740		X	X	X	X	X	X	X	X
Sikafloor-100-750		X	X	X	X	X	X	X	X
Sikafloor-100-760		X	X	X	X	X	X	X	X
Sikafloor-100-770		X	X	X	X	X	X	X	X
Sikafloor-100-780		X	X	X	X	X	X	X	X
Sikafloor-100-790		X	X	X	X	X	X	X	X
Sikafloor-100-800		X	X	X	X	X	X	X	X
Sikafloor-100-810		X	X	X	X	X	X	X	X
Sikafloor-100-820		X	X	X	X	X	X	X	X
Sikafloor-100-830		X	X	X	X	X	X	X	X
Sikafloor-100-840		X	X	X	X	X	X	X	X
Sikafloor-100-850		X	X	X	X	X	X	X	X
Sikafloor-100-860		X	X	X	X	X	X	X	X
Sikafloor-100-870		X	X	X	X	X	X	X	X
Sikafloor-100-880		X	X	X	X	X	X	X	X
Sikafloor-100-890		X	X	X	X	X	X	X	X
Sikafloor-100-900		X	X	X	X	X	X	X	X
Sikafloor-100-910		X	X	X	X	X	X	X	X
Sikafloor-100-920		X	X	X	X	X	X	X	X
Sikafloor-100-930		X	X	X	X	X	X	X	X
Sikafloor-100-940		X	X	X	X	X	X	X	X
Sikafloor-100-950		X	X	X	X	X	X	X	X
Sikafloor-100-960		X	X	X	X	X	X	X	X
Sikafloor-100-970		X	X	X	X	X	X	X	X
Sikafloor-100-980		X	X	X	X	X	X	X	X
Sikafloor-100-990		X	X	X	X	X	X	X	X
Sikafloor-100-1000		X	X	X	X	X	X	X	X



Sika Services AG
Sprengstrasse 22
CH-8330 Wetzikon, ZH
Schweiz

Phone: +41 44 403 13 00
Telex: +41 44 403 13 00



Recommended cleaning equipment

Efficiency: m²/h (Brush: Standard, red)

BR 40/10	BD/BR 40/25 C	BD/BR 55/40 W	B 90/R	BD/BR 90/140 R Bp
< 400 m ² /h	400-600 m ² /h	500-1400 m ² /h	1200-3000 m ² /h	3000-6000 m ² /h

BR 40/10: This is a compact unit suitable for a single operator. It is ideal for cleaning small areas (up to 400 m²) and is suitable for cleaning concrete.

BD/BR 40/25 C: Manually operated motor-operated floor cleaner with the brush roll. It is suitable for cleaning small areas (up to 600 m²) and is suitable for cleaning concrete.

BD/BR 55/40 W: Cordless battery floor cleaner with motor-operated floor brush roll. It is suitable for cleaning small areas (up to 1400 m²) and is suitable for cleaning concrete.

B 90/R: Battery-powered floor cleaner with motor-operated floor brush roll. It is suitable for cleaning small areas (up to 3000 m²) and is suitable for cleaning concrete.

BD/BR 90/140 R Bp: Battery-powered floor cleaner with motor-operated floor brush roll. It is suitable for cleaning small areas (up to 6000 m²) and is suitable for cleaning concrete.

BD/BR 45/40 C	BD/BR 55/60 W Bp	BD/BR 75/40 R Bp	BD/BR 100/250 R Bp
400-1100 m ² /h	1000-2000 m ² /h	2500-5000 m ² /h	4000-11000 m ² /h

BD/BR 45/40 C: Cordless battery floor cleaner with motor-operated floor brush roll. It is suitable for cleaning small areas (up to 1100 m²) and is suitable for cleaning concrete.

BD/BR 55/60 W Bp: Cordless battery floor cleaner with motor-operated floor brush roll. It is suitable for cleaning small areas (up to 2000 m²) and is suitable for cleaning concrete.

BD/BR 75/40 R Bp: Cordless battery floor cleaner with motor-operated floor brush roll. It is suitable for cleaning small areas (up to 5000 m²) and is suitable for cleaning concrete.

BD/BR 100/250 R Bp: Cordless battery floor cleaner with motor-operated floor brush roll. It is suitable for cleaning small areas (up to 11000 m²) and is suitable for cleaning concrete.

BD/BR 65/80 W Bp	BD/BR 120/250 R Bp
1500-2500 m ² /h	5000-15000 m ² /h

BD/BR 65/80 W Bp: Cordless battery floor cleaner with motor-operated floor brush roll. It is suitable for cleaning small areas (up to 2500 m²) and is suitable for cleaning concrete.

BD/BR 120/250 R Bp: Cordless battery floor cleaner with motor-operated floor brush roll. It is suitable for cleaning small areas (up to 15000 m²) and is suitable for cleaning concrete.

For further information please contact:

KÄRCHER
Alfred Kärcher GmbH & Co. KG
Alfred-Kärcher-Str. 26-42
D-71364 Winnenden, Germany
www.kaercher.com
Telephone: +49 71 955-14 0
Telex: +49 71 955-14 22 12

Recommended supplier of cleaning products:

Alfred Kärcher GmbH & Co. KG www.kaercher.com

Wetrok AG www.wetrok.de

JohnsonDiversey www.johnsondiversev.com

Johannes Kiehl KG www.kiehl-group.com



Sika Services AG, Tüffenwies 16, 8048 Zürich, Switzerland
Phone: +49 711 8009 3231 / Fax: +49 711 8009 1251
E-Mail: willmann.joerg@ch.sika.com
www.sika.com

16. Health and Safety Recommendations

Ensure sufficient ventilation during application.

Wear proper safety equipment (gloves, eye goggles, safety boots and protective clothes) during application.

For more details, refer to Individual Safety Data Sheet (available upon request).

Construction



Sika Services AG, Tüffenwies 16, 8048 Zürich, Switzerland
Phone: +49 711 8009 3231 / Fax: +49 711 8009 1251
E-Mail: willmann.joerg@ch.sika.com
www.sika.com