

Self-Adhesive Bituminous Membrane Self-Protected with a Cross-Laminated HDPE Film

Elotene
Waterproofing

The Product

Elotene 3000 X is a self-adhesive bituminous waterproofing membrane self-protected with a cross-laminated HDPE film. It consists of a very adhesive bituminous compound that remains adhesive even at low temperatures. The cross-laminated high-density polyethylene film gives the membrane characteristics of dimensional stability and ensures uniform reaction to elongation stresses in a longitudinal and transversal direction. Elotene 3000 X also protects against harmful infiltrations of Radon and Methane Gas, and withstands heat fluctuations and contact with chemical and/or polluting agents. It can be cold-applied on both vertical and horizontal concrete and masonry surfaces and, thanks to its composition, Elotene 3000 X can be exposed to UV rays, for 3 months from installation. It offers high mechanical strength, considerable ultimate elongation and good resistance to punching and perforation. The membrane is highly resistant to ageing and possesses good flexibility at low temperatures.

Characteristics

- Waterproof;
- Self-adhesive;
- Self-sealing;

- Cold applied without use of flames;
- Excellent shape stability;
- Radon and Methane Gas barrier;
- Full adhesion to support;
- Resistant to tearing and perforation;
- Flexible;
- Controlled thickness.

Advantages

- Quick installation;
- Installation does not require skilled personnel;
- Elimination of risks deriving from the use of open flames;
- Excellent performance;
- Versatile.

Uses

- Waterproofing of foundations and/or horizontal and vertical underground structures;
- Waterproofing on insulation systems that are not fireproof;
- Waterproofing of multi-level garage floors, foundations, tunnels, terraces, flat/sloped roofs.

Technical data

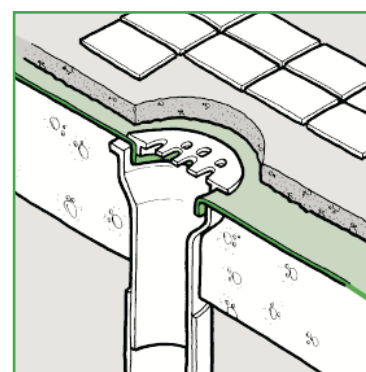
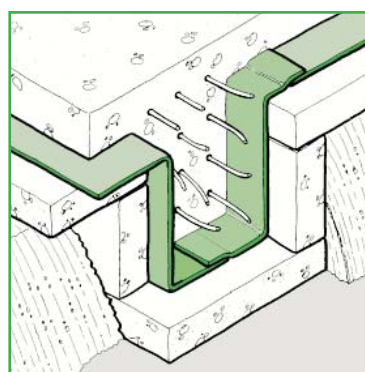
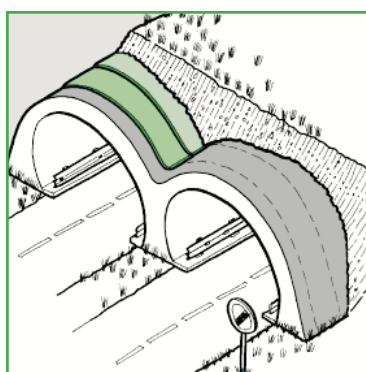
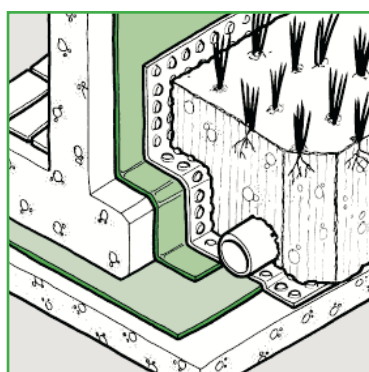
Elotene 3000 X

CHARACTERISTICS	VALUE	TEST
Thickness	1.5 mm	EN 1849-1
Adhesion to Primed Concrete	> 250 N	ASTM D 1000
Adhesion to Steel	> 250 N	ASTM D 1000
Tensile Strength	Long. 215 N/50mm Trans. 220 N/50mm	EN 12311-1
Elongation at Break	Long. 324.0% Trans. 238.0%	EN 12311-1
Impact Resistance	Met. A 500 mm Met. B 1000 mm	EN 12691
Static Load Resistance	Met. A 10 Kg Met. B 15 Kg	EN 12730
Tear Resistance	Long. 125 N Trans. 65 N	EN 12310-1
Impermeability	≥ 60 Kpa	EN 1928

CHARACTERISTICS	VALUE	TEST
Vapour Transmission Rate	90000 μ	EN 1931
Water Absorption	0.09%	ASTM D 570
Hydrostatic Test	> 6 bar (24 hrs)	DIN 52123
	no leakage at 3 bars for 1 hr	DIN 16935
Permeability to Radon Gas	$5.7 \times 10^{-12} \text{ m}^2/\text{s}$	SP Swedish Nat. Testing & Research Institute
Permeability to Methane Gas	$< 5 \text{ cc/m}^2 \times 24 \text{ h} \times \text{atm}$	CSI Method
Application Temperature	+5°C / +45°C	-
Service Temperature	-40°C / +80°C	-



Notified Body 0120 - FPC GB 06/69900
CE Conformity Data Sheet is available on request.



Surface Preparation and Installation

All surfaces on which Elotene Waterproofing membranes have to be installed must be dry, clean, smooth and free of impurities.

If the surface is porous, apply a coat of Isoltema Primer in a quantity of +/- 250 g/sq m.

The use of Isoltema Primer is in any case advisable, and the manufacturers instructions must be followed. A wrong use of Primer can influence the membrane efficiency. To achieve the best result, proceed as follows: always start by laying the rolls from the lowest point and work upwards, being careful not to create counter-gradient overlaps. The membrane must be overlap at the edge by at least 6/8 cm and on the top by at least 15 cm.

After installation, press the membrane well, being very careful about details such as comers, edges, connections and overlap.

Important Notes

Storage The quality and the characteristics of materials remain unaltered for a very long time.

It is however best to use the product within 12 months. For correct storage, a dry, covered place is best at a

temperature between +5°C and +40°C.

The product is not affected by frost.

Traffic - Elotene 3000 X is not suitable for withstanding pedestrian and vehicle traffic.

Caution and Safety The materials is not hazardous for normal uses and when used by skilled persons. In particular conditions, it is possible to cut or injure oneself. Keep out of reach of children.

For further information refer to the Safety Data Sheet.

Classification for transport: Not Applicable.

Inflammability classification: B2 (DIN 4102).

Reaction to fire: E (EN 11925 - 2; EN 13501 - 1).

The manufacturer disclaims all liability for product use and applications.

Dimensions and Packaging

Elotene 3000 X is available in rolls of 1 mt x 20 mt with 1.5 mm thickness.

Other lengths and thicknesses are available on request.

The rolls are packed individually in cardboard boxes and placed on pallets.

The figures shown on this product leaflet can vary within a tolerance of +/-5%.
The manufacturer reserves the right to change product characteristics at any time without prior notice.



Isoltema S.p.A.
via G. Perticari 6/8
47035 Gambettola (FC)
Italy

ph. +39 0547 54240
fax +39 0547 54242
www.isoltema.com
isoltema@isoltema.com